

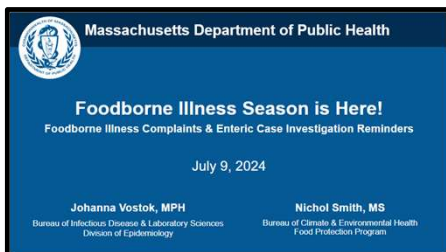


# Massachusetts Department of Public Health

## MDPH Tuesday Infectious Disease Webinar Series

### Tools for Local Boards of Health

**July 9, 2024**



**Hillary Johnson, MHS**

Senior Epidemiology Advisor to Local Health, Division of Epidemiology

**Scott Troppy, MPH, PMP**

Senior Epidemiologist – MAVEN User Management & Data Visualization Lead

**Kate Hamdan, MPH**

Surveillance Epidemiologist, MAVEN Training Team Lead

**Julie Coco, MPH**

Internship Program and Training Coordinator, Division of Epidemiology

**Petra Schubert, MPH**

Emerging Infections Coordinator, Division of Epidemiology

# Agenda June 9, 2024

- **MDPH Updates Today**
  - **MAVEN: Electronic Case Reporting (eCR) Updates**
    - Molly Crockett, MPH
    - Tara Fleckner, MPH
  - **Viral Hepatitis Report**
  - **Measles Exposure Update**
  - **Pertussis Updates**
- **Featured Presentation: Foodborne Illness Complaints & Enteric Case Investigation Reminders 2024**
  - Johanna Vostok, MPH, Division of Epidemiology
  - Nichol Smith, MS, Food Protection Program



# Infectious Disease Tools for LBOH Webinar Schedule!

## 2024 Upcoming Schedule!

All Registrations:	<a href="http://tinyurl.com/MAVEN-Webinars">http://tinyurl.com/MAVEN-Webinars</a>
2 <sup>nd</sup> Tues 7/9/24	Foodborne Illness Complaints and Enteric Case Investigation Reminders
4 <sup>th</sup> Tues 7/23/24	4 <sup>th</sup> Tuesday Office Hours
	<b>No August 2024 Webinar</b>
	<b>Happy Summer Break!</b>
2 <sup>nd</sup> Tues 9/10/24	Case Investigation Tools and Tips Fall 2024 Updates
4 <sup>th</sup> Tues 9/24/24	4 <sup>th</sup> Tuesday Office Hours
2 <sup>nd</sup> Tues 10/8/24	Respiratory Illness Season 2024!
4 <sup>th</sup> Tues 10/22/24	4 <sup>th</sup> Tuesday Office Hours

Please Update To

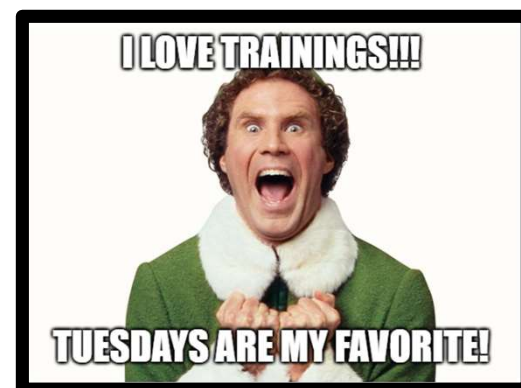
**2024 NEW REGISTRATION PAGE:**

<http://tinyurl.com/MAVEN-Webinars>

- You help us identify topics, needs, & content!
- Be sure to send ideas, requests, and questions to Hillary and Scott!

MAVEN Help has Guidance Documents and Previous Webinars:

<http://www.maven-help.maventrainingsite.com/toc.html>



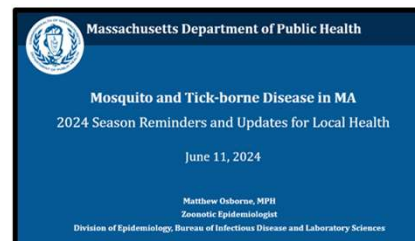
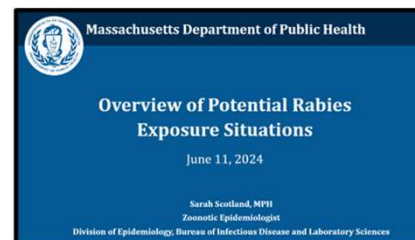
**You can always contact**  
[mavenhelp@mass.gov](mailto:mavenhelp@mass.gov) or  
**The MDPH Epi Program**  
**at 617-983-6800 with**  
**specific questions.**

**Next Office Hours: Tuesday, July 23, 2024!**

# Updates – A quick recap for July 9, 2024

## June 11, 2024:

- **MDPH Updates**
  - **MAVEN Reminders**
    - Check Your Immediate, Routine, and Pending Workflows
  - **Virtual Gateway Updates!**
    - New Business Accounts & New URL: <https://virtualgateway.mass.gov/>
  - **MAVEN: Out of Office Protocols & Coverage**
- **Featured Presentation: Overview of Potential Rabies Exposure Situations**
  - Sarah Scotland, MPH, Zoonotic Epidemiologist
- **Featured Presentation: Mosquito and Tick-borne Disease in MA: 2024 Season Reminders and Updates for Local Health**
  - Matthew Osborne, MPH, Zoonotic Epidemiologist



Rabies: [PDF Slides](#), [Recording](#)

2024 Mosquito & Tick Season: [PDF Slides](#), [Recording](#)

Always Remember you can see recent webinar recordings and slides in MAVEN Help.

**Bookmark the URL!**

**MAVEN Help:** <http://www.maven-help.maventrainingstoc.com/toc.html>





# Massachusetts Department of Public Health

## Electronic Case Reporting (eCR) Data in MAVEN

LBOH Webinar  
July 9, 2024

Molly Crockett, MPH  
Tara Fleckner, MPH  
Bureau of Infectious Disease and Laboratory Sciences

# Electronic Case Reporting (eCR) Update for MA

- **A National System of Healthcare Organizations (HCOs) send automated Electronic Health Record (EHR) data for potential reporting to a centralized AIMS hub (a decision point hosted by CDC/APHL).**
  - Each potential case is checked against MADPH-authored rules to see if it should be reported to us
- **What's already coming in:**
  - A limited number of HCOs are only sending potential COVID, Mpox, Influenza and Measles
- **What is changing:**
  - HCOs only sending conditions above are getting ready to send possible cases for all conditions
  - HCOs are in process of onboarding, so there will soon be a substantial increase in volume

# eCR Data In MAVEN

Question Packages	
Question Package	
1. Administrative	
2. Demographic	
3. Clinical	
4. Vaccine and IG Information	
5. Risk/Exposure/Control & Prevention	
6. Contact Monitoring	
6. Epi-linked and Outbreak Information	
8. ECR Information	
9. Electronic Case Reporting	
9. Exposure Notification (ENX) Information	
9. Sequencing Information	

All relevant lab information will be entered into the lab tab of MAVEN and can be verified as received by eCR via the Electronic Laboratory Data Source, which populates with “Electronic Case Report.”

Messages reportable to MADPH are parsed into fields in the Electronic Case Reporting Question Package.

This Question Package contains only clinical data that is appropriate for the reportable condition.

Details	
Last Update:	07/08/2024
Updated By:	Tara Fleckner [tfleckner]
Electronic Laboratory Data	Electronic Case Report
Source:	
Specimen Date:	10/30/2023
Specimen Number:	1234567
Specimen Source:	181
Test:	2019-NCOV RNA PNL XXX NAA+PROBE
Result:	Positive
DSAI Received Date:	10/30/2023

# eCR Data In MAVEN, Continued

EICR Information

Visit Date

10/30/2023

+

Add New

Reason for visit:

Diarrhea

Race (old)

White

eCR Hispanic:

No

Was patient pregnant at the time of the visit?

Unknown

Pregnancy Information Date:

mm/dd/yyyy

Current housing status

Did patient die:

eCR Occupation:

eCR Industry:

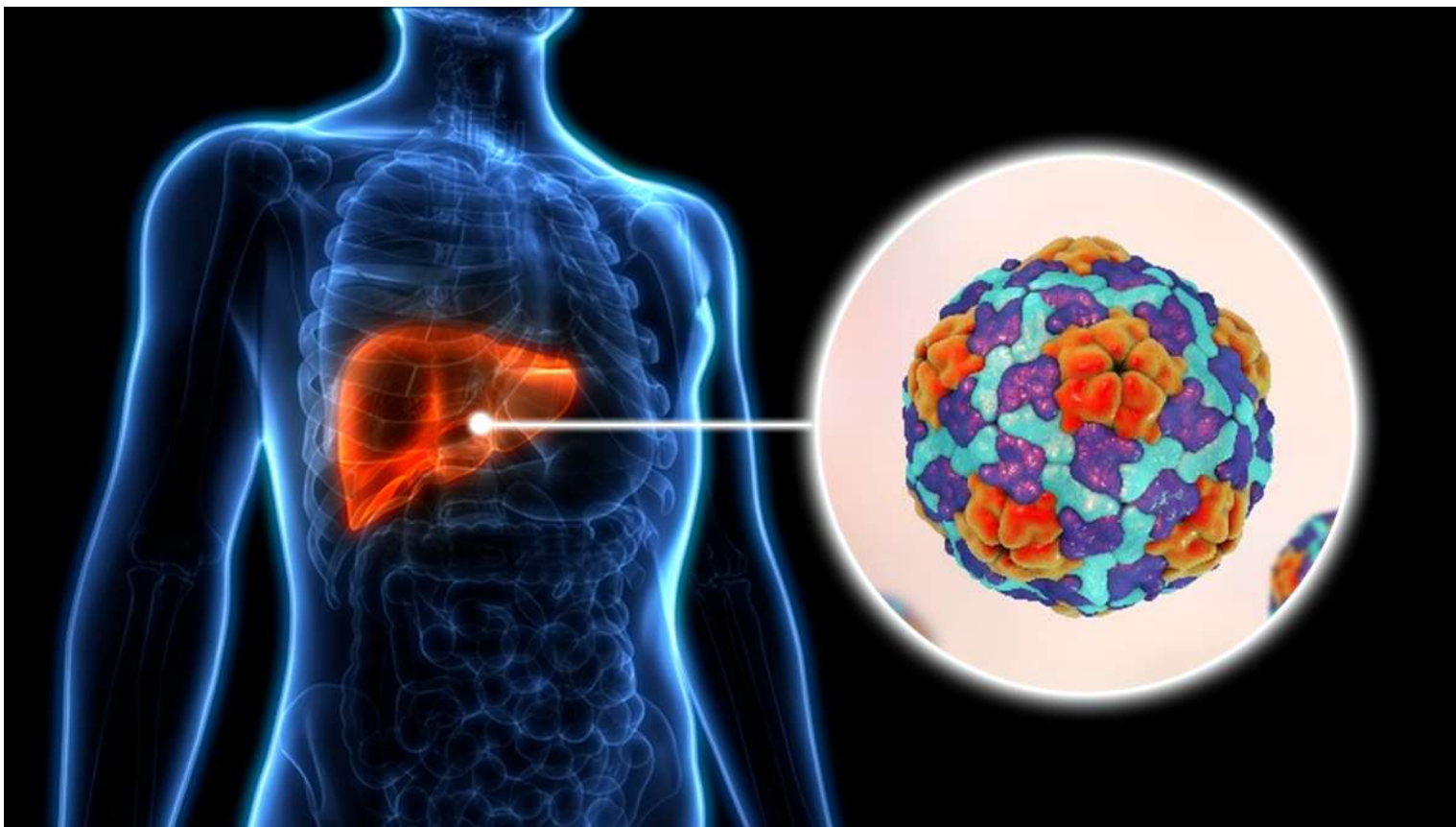
Currently, data simply populate fields in the eCR Question Package and lab tab but substantial work is being planned to integrate data where appropriate into specific workflows and make data more useful.

For questions about eCR data in MAVEN, please contact:

**[ImmediateDiseaseReporting@mass.gov](mailto:ImmediateDiseaseReporting@mass.gov)**

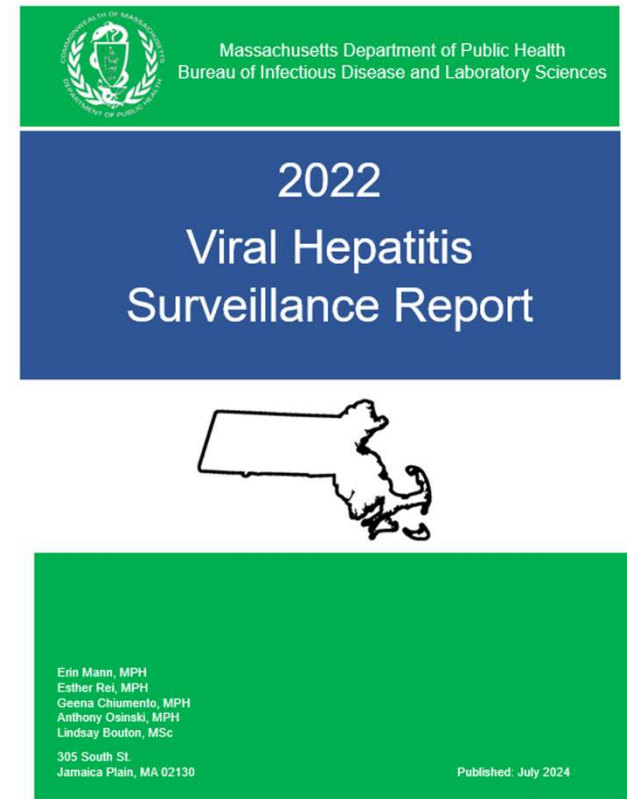


# MA Viral Hepatitis Update

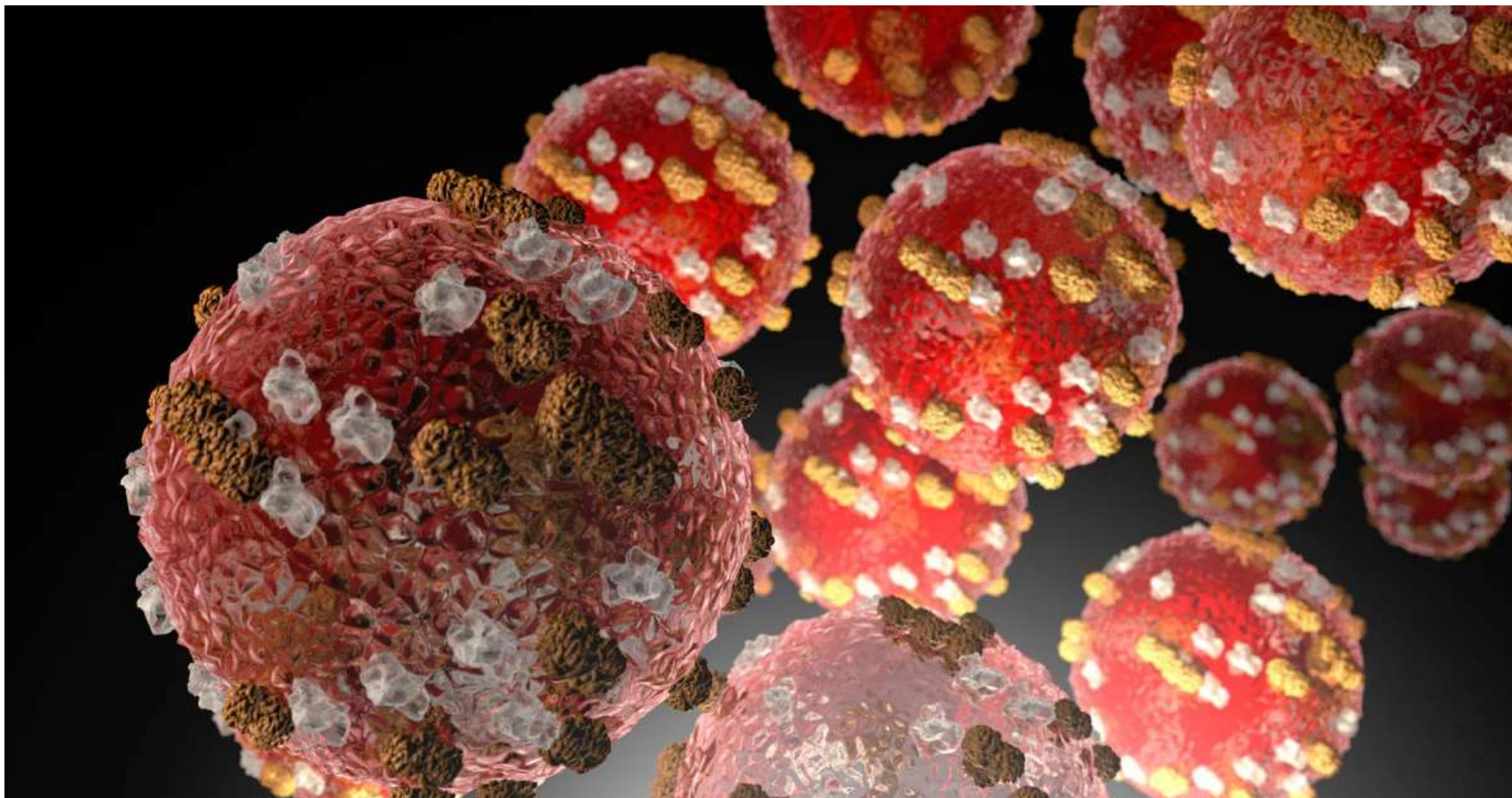


# MDPH Publishes Updated Viral Hepatitis Surveillance Report

- **Updated Viral Hepatitis Surveillance Report contains data through 2022**
  - Available [online](#) and can be [downloaded directly](#)
  - Collects in one document information on reported cases of hepatitis A, B, and C
  - Features new analyses and visualizations
  - Emphasizes the ongoing contribution of drug use and unstable housing to transmission of viral hepatitis
  - **Thank you** for your efforts on viral hepatitis case investigations!
  - Feedback is welcome – please send to: [Erin.K.Mann@mass.gov](mailto:Erin.K.Mann@mass.gov)



# MA Measles Updates



# Potential Measles Exposure In MA (6/22/24)

- [MDPH Press Release \(6/29\)](#): Case of measles diagnosed in an international visitor who traveled through Boston to Amsterdam using public transportation on **Saturday, June 22, 2024** while infectious.
  - **11:40 a.m. Dartmouth Coach bus line departure from Hanover, NH**
    - Dartmouth College to Boston, MA arriving at Logan Airport (Boston, MA) at approximately 2:40 p.m.
  - **2:40 p.m. to 8:40 p.m. Terminal E at Logan Airport, Boston, MA**
    - Flight KLM6016 from Boston to Amsterdam departing from Gate E5
- People who have had measles, or who have been vaccinated against measles per CDC recommendations are considered immune.



# Potential Measles Exposure In MA (6/22/24)

- [MDPH Press Release](#): Case of measles diagnosed in an international visitor who traveled through Boston to Amsterdam using public transportation on **Saturday, June 22, 2024** while infectious.
  - **Measles Incubation:** Max 21 Days.
  - **Last Day of Incubation Period:** Sat. July 13, 2024
  - **Questions:** call the Epi Program 617-983-6800
- **We have a great Measles webinar on MAVEN Help:** [Slides](#), [Recording](#)

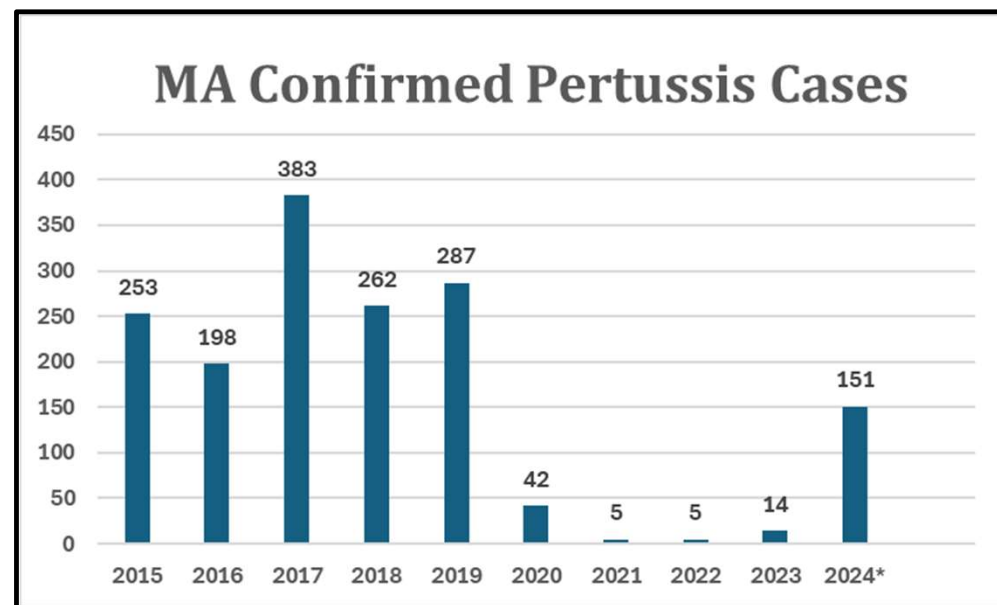


# MA Pertussis (Whooping Cough) Updates



# Pertussis (Whooping Cough) Updates

- MA is experiencing an increase in Pertussis cases since Spring 2024.
- Pertussis is a “routine” disease event in MAVEN and requires follow-up on the case and potential contacts.
- Great LBOH Webinar on Pertussis Case Investigation on MAVEN Help: [PDF Slides](#) & [Webinar Recording](#)



*\*Data as of 6/30/2024 and subject to change.*

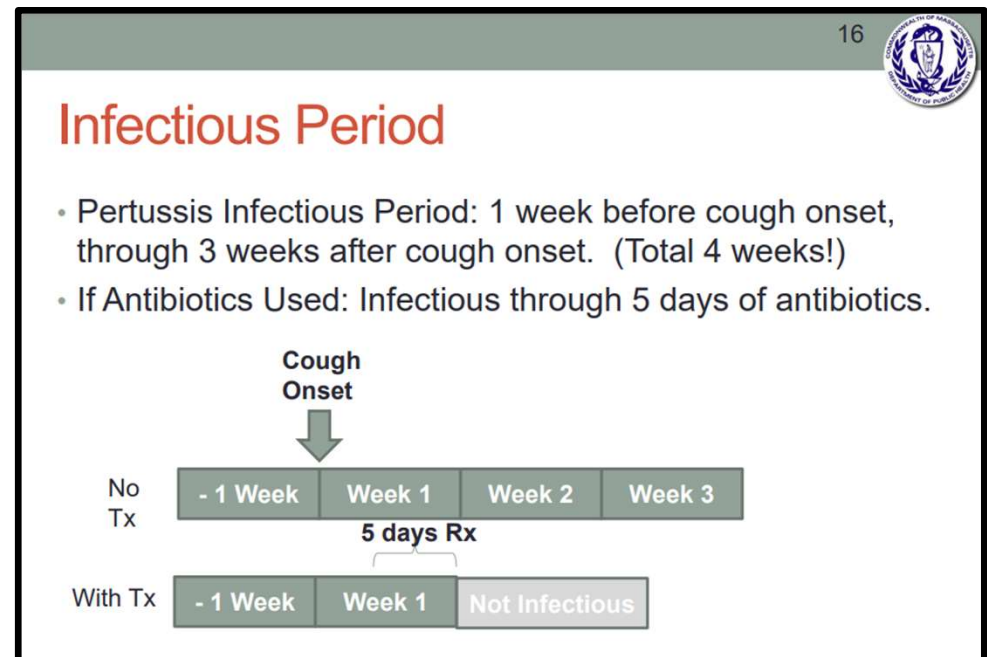
# Additional Pertussis Resources

- **Webinars and Resources:** [Train Massachusetts](#)
  - [An Old Friend is Back: The “What” and “Why” of Pertussis Reemergence](#)
  - [Immunization: You Call the Shots-Module Nine-Tetanus, Diphtheria, and Pertussis \(Tdap and Td\) Vaccines 2024](#)
- **CDC Links:**
  - [Pinkbook: Pertussis | CDC](#)
  - [Pertussis | Infection Control | CDC](#)
  - [Clinical Overview of Pertussis | Pertussis \(Whooping Cough\) | CDC](#)
- **Podcasts:**
  - [Episode 44 Pertussis: Whoop Here It Is – This Podcast Will Kill You](#)



# Pertussis (Whooping Cough) Reminders

- **Cough Onset Date is critical to collect.** Helps Determine:
  - Is patient still infectious?
  - Should they be excluded?
  - Do they need antibiotics?
  - Were they infectious when different contacts were exposed?



# Pertussis (Whooping Cough)

- **Q. Is it possible for fully vaccinated individuals to get pertussis?**
  - **A.** Yes. Immunity from DTaP and Tdap vaccines wanes over time.
- **Q. What if a case is still coughing after completing their 5-day course of antibiotics (Z-Pak)?**
  - **A.** This is common, as recovery from pertussis is gradual. If they have completed the appropriate antibiotic course, they are no longer infectious to others, however many patients will still take time to resolve their cough.

# Pertussis (Whooping Cough)

- **Q. If an exposed close contact is vaccinated, do they still need postexposure prophylaxis (PEP)?**
  - **A.** Yes. CDC supports providing PEP especially to:
    - Household contacts of a pertussis case
    - People at high risk of developing severe pertussis infection
    - Those who will have contact with people at high risk of developing severe pertussis infection
  - Within families, studies demonstrate that secondary attack rates are high, even when household contacts are current with pertussis vaccinations.

<https://www.cdc.gov/pertussis/php/postexposure-prophylaxis/index.html>

**QUESTIONS?**